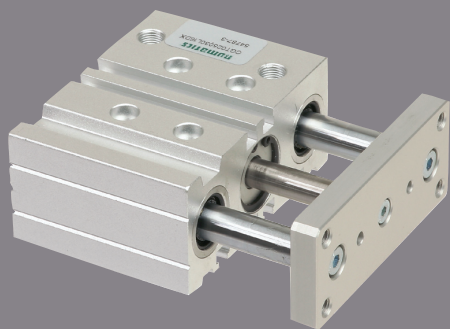


UNITATI GHIDATE COMPACTE

seria CGT

Ø 16 to 63 mm



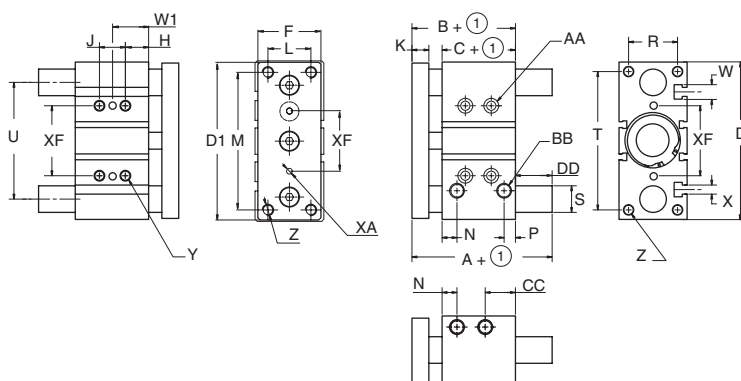
CARACTERISTICI	Fluide	aer sau gaz neutru, filtrat, lubrificat sau nu
	Presiune de lucru	max. 10 bar
	Temperatura	-20°C la +80°C
	Corp	aliaj de aluminiu
	Raclor tija	otel
	Placa mobila	aliaj aluminiu
	Tije ghidare	otel durificat si rectificat
	Piston	in interiorul corpului

- ☐ **Sistem compact**
- ☐ **Ideal pentru sarcini mari si aplicatii de forta**
- ☐ **Lagare cu bile (aplicatii dificile) sau bucese de bronz (aplicatii medii sau usoare)**

ALEGEREA PRODUSULUI

Ø	cursa	cod		Ø	cursa	cod		Ø	cursa	cod	
		bucsa bronz	lagare cu bile			mm	mm			bucsa bronz	lagare cu bile
16	10	CGT016010B16DX	CGT016010L16DX	25	40	CGT025040B16DX	CGT025040L16DX	40	75	CGT040075B16DX	CGT040075L16DX
	20	CGT016020B16DX	CGT016020L16DX		50	CGT025050B16DX	CGT025050L16DX		100	CGT040100B16DX	CGT040100L16DX
	40	CGT016040B16DX	CGT016040L16DX		75	CGT025075B16DX	CGT025075L16DX		25	CGT050025B16DX	CGT050025L16DX
	50	CGT016050B16DX	CGT016050L16DX		100	CGT025100B16DX	CGT025100L16DX		50	CGT050050B16DX	CGT050050L16DX
	20	CGT020020B16DX	CGT020020L16DX		25	CGT032025B16DX	CGT032025L16DX		75	CGT050075B16DX	CGT050075L16DX
20	40	CGT020040B16DX	CGT020040L16DX	32	50	CGT032050B16DX	CGT032050L16DX	50	100	CGT050100B16DX	CGT050100L16DX
	50	CGT020050B16DX	CGT020050L16DX		75	CGT032075B16DX	CGT032075L16DX		25	CGT063025B16DX	CGT063025L16DX
	75	CGT020075B16DX	CGT020075L16DX		100	CGT032100B16DX	CGT032100L16DX		50	CGT063050B16DX	CGT063050L16DX
20	100	CGT020100B16DX	CGT020100L16DX	40	25	CGT040025B16DX	CGT040025L16DX	63	75	CGT063075B16DX	CGT063075L16DX
	25	CGT025020B16DX	CGT025020L16DX		50	CGT040050B16DX	CGT040050L16DX		100	CGT063100B16DX	CGT063100L16DX

DIMENSIUNI



① Cursa

Ø	bucsa bronz				J	J
	A	A	DD	DD		
16	46	-	0	-	24	44
	(10-50)		(10-50)		(10-20)	(40-50)
20	53	84,5	0	31,5	24	44
	(20-50)	(75-100)	(20-50)	(75-100)	(20)	(40-100)
25	53,5	85	0	31,5	24	44
	(20-50)	(75-100)	(20-50)	(75-100)	(20)	(40-100)
32	97	107	37,5	47,5	24	48
	(25-50)	(75-100)	(25-50)	(75-100)	(25)	(50-100)
40	97	107	31	41	24	48
	(25-50)	(75-100)	(25-50)	(75-100)	(25)	(50-100)
50	106,5	118	34,5	46	24	48
	(25-50)	(75-100)	(25-50)	(75-100)	(25)	(50-100)
63	106,5	118	29,5	41	28	52
	(25-50)	(75-100)	(25-50)	(75-100)	(25)	(50-100)

Ø	lagare cu bile				W1	W1
	A	A	DD	DD		
16	46	66	0	20	17	27
	(10-30)	(40-50)	(10-30)	(40-50)	(10-20)	(40-100)
20	53	85,5	0	32,5	29	39
	(20-30)	(40-100)	(20-30)	(40-100)	(20)	(40-100)
25	53,5	86	0	32,5	29	39
	(20)	(40-100)	(20)	(40-100)	(20)	(40-100)
32	97	107	37,5	47,5	33	45
	(25-50)	(75-100)	(25-50)	(75-100)	(25)	(50-100)
40	97	107	31	41	34	46
	(25-50)	(75-100)	(25-50)	(75-100)	(25)	(50-100)
50	106,5/114	118	34,5/42	46	36	48
	(25/50)	(75-100)	(25/50)	(75-100)	(25)	(50-100)
63	106,5/114	118	29,5/37	41	38	50
	(25/50)	(75-100)	(25/50)	(75-100)	(25)	(50-100)

Ø	B	C	D	D1	F	H	K	L	M	N	P	R	S	T	U	W	X	Y	Z	AA	BB	CC	XA	XF
16	46	33	64	62	25	5	8	16	54	11	8	22	10	56	46	7,40	4,4	M5	M5	4 mm SHCS	M5	18	3	24
20	53	37	83	81	30	17	10	18	70	10,5	8,5	24	12	72	54	8,40	5,5	M6	M5	5 mm SHCS	G 1/8	24,5	3	28
25	53,5	37,5	93	91	38	17	10	26	78	11,5	9	30	16	82	64	8,40	5,5	M6	M6	5 mm SHCS	G 1/8	24	4	34
32	59,5	37,5	112	110	44	21	12	30	96	12,5	9	34	20	98	78	10,50	6,5	M8	M8	6 mm SHCS	G 1/8	30,5	4	42
40	66	44	120	118	44	22	12	30	104	14	10	40	20	106	86	10,50	6,5	M8	M8	6 mm SHCS	G 1/8	31	4	50
50	72	44	148	146	60	22	16	40	130	14	11	46	25	130	110	13,5	8,5	M10	M10	8 mm SHCS	G 1/4	35	5	66
63	77	49	162	158	70	24	16	50	130	16,5	13,5	58	25	142	124	17,8	11	M10	M10	8 mm SHCS	G 1/4	35	5	80