






## ACCESORII DE MONTAJ (livrate impreuna cu suruburile necesare)


tip	Ø cilin-dru	cod
<b>Talpa joasa MS1 (set 2 piese)</b>		
	Ø mm	placa otel
	32	43400163
	40	43400164
	50	43400165
	63	43400166
	80	43400167
100	43400168	


tip	Ø cilin-dru	cod		
<b>Flansa cu ax MP2</b>				
	Ø mm	aliaj usor	fonta + otel fara bucsa	fonta+otel +bucsă
	32	43400130	43400257	43400185
	40	43400131	43400258	43400186
	50	43400132	43400259	43400187
	63	43400133	43400260	43400188
	80	43400134	43400261	43400189
100	43400135	43400262	43400190	


tip	Ø mm	otol
<b>Talpa inalta MS3 (per bucata)</b>		
	32	43400307
	40	43400308
	50	43400309
	63	43400310
	80	43400311
	100	-


tip	Ø mm	aliaj usor	fonta fara bucsa
<b>Flansa cu ochi MP4</b>			
	32	43400125	43400266
	40	43400126	43400267
	50	43400127	43400268
	63	43400128	43400269
	80	43400129	43400270
	100	43400161	43400271


tip	Ø mm	fonta, livrat complet montat la cota XV (pag. 36)	fonta livrat separat
<b>Cadru oscilant MT4 (cilindru cu corp profilat PES 453)</b>			
	32	410564	410570
	40	410565	410571
	50	410566	410572
	63	410567	410573
	80	410568	410574
	100	410569	410575



tip	Ø mm	aliaj usor
<b>Brida inclinata AB7</b>		
	32	43400383
	40	43400384
	50	43400385
	63	43400386
	80	43400387
	100	43400388


tip	Ø mm	otol, livrat complet montat la cota XV (pag. 37)	otol livrat separat
<b>Suport oscilant MT4 (cilindru cu corp profilat PES 453 - PEC)</b>			
	32	410592	410598
	40	410593	410599
	50	410594	410600
	63	410595	410601
	80	410596	410602
	100	410597	410603

tip	Ø mm	otol forjat
<b>Flansa pentru brida cu lagar sferic sau brida AB6</b>		
	32	43400363
	40	43400364
	50	43400365
	63	43400366
	80	43400367
	100	43400368

tip	Ø mm	fonta, livrat complet montat la cota XV (pag. 37)
<b>Cadru oscilant MT4 (cilindru cu tiranti PES 450)</b>		
	32	410548
	40	410549
	50	410550
	63	410551
	80	410552
	100	410553

tip	Ø mm	otol forjat
<b>Brida inclinata cu lagar sferic AB5</b>		
	32	43400354
	40	43400355
	50	43400356
	63	43400357
	80	43400358
	100	43400359

tip	Ø mm	Cap tija-furca otel	Cap cu lagar sferic otel
<b>Cap tija - furca (ISO 8140 - RP 102P) AP2</b>			
	32	43400016	43400001
	40	43400017	43400002
<b>Cap tija cu lagar sferic (ISO 8139 - RP 103P) AP6</b>			
	50	43400018	43400003
	63	43400018	43400003
	80	43400019	43400004
	100	43400019	43400004

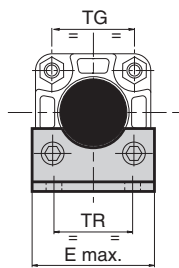
tip	Ø mm	otol forjat
<b>Flansa cu lagar sferic MP6</b>		
	32	43400372
	40	43400373
	50	43400374
	63	43400375
	80	43400376
	100	43400377

# CILINDRI CU CORP PROFILAT si CU TIRANTI - tip PES

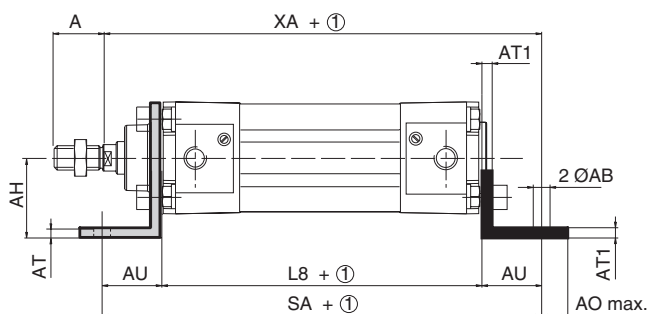
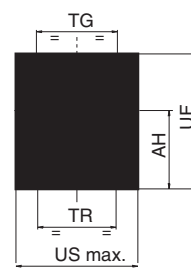
## DIMENSIUNI

### Montaj pe talpa

Talpa joasa MS1



Talpa inalta MS3



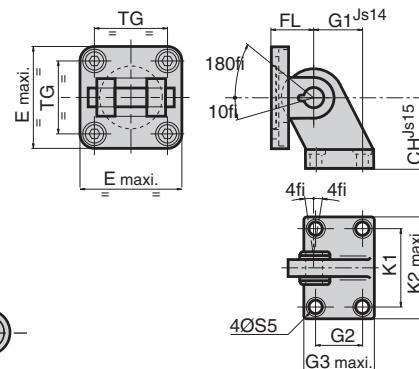
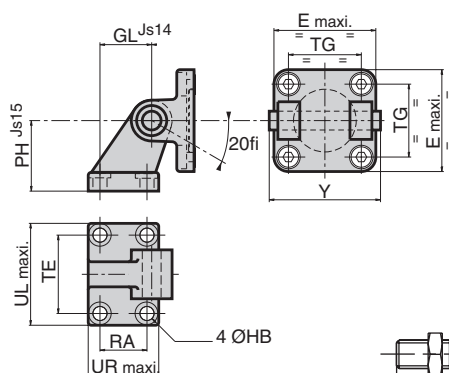
① : Cursa

Ø mm	A	AB	AH	AO	AT	AT1	AU	E/US	L8	TR	SA	TG	UF	XA
32	22	7	32	11	4	8	24	50	94	32	142	32,5	54	144
40	24	10	36	15	4	8	28	58	105	36	161	38	62	163
50	32	10	45	15	5	10	32	70	106	45	170	46,5	77	175
63	32	10	50	15	5	10	32	85	121	50	185	56,5	87	190
80	40	12	63	20	6	12	41	105	128	63	210	72	110	215
100	40	14,5	71	25	6	12	41	130	138	75	220	89	130	230

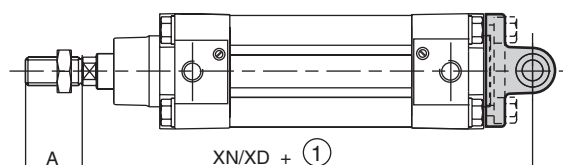
### Montaj oscilant

Montaj complet cu brida inclinata MP2 + AB7

Montaj complet cu brida inclinata cu lagar sferic AB6 + AB5

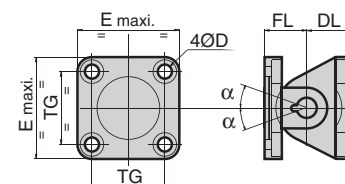
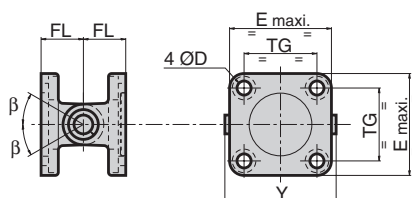


① : Cursa



Montaj complet drept MP2 + MP4

Montaj complet drept, cu lagar sferic AB6 + MP6



Ø mm	A	D	E	FL/DL	G1/GL	G2/RA	G3/UR	HB/S5	K1/TE	K2/UL	PH/CH	TG	XN/XD	Y	α	β
32	22	6,6	50	22	21	18	31	6,6	38	51	32	32,5	142	56	40°	45°
40	24	6,6	58	25	24	22	35	6,6	41	54	36	38	160	63	45°	50°
50	32	9	70	27	33	30	45	9	50	65	45	46,5	170	71	35°	40°
63	32	9	85	32	37	35	50	9	52	67	50	56,5	190	81	50°	55°
80	40	11	105	36	47	40	60	11	66	86	63	72	210	101	40°	45°
100	40	11	130	41	55	50	70	11	76	96	71	89	230	128	30°	35°

# CILINDRI CU CORP PROFILAT si CU TIRANTI - tip PES

## DIMENSIUNI

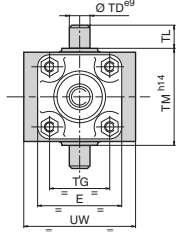
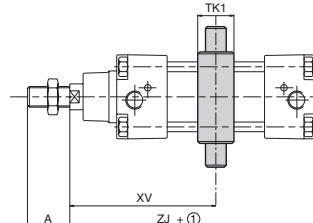
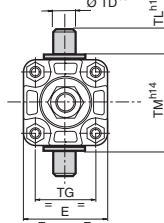
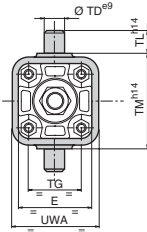
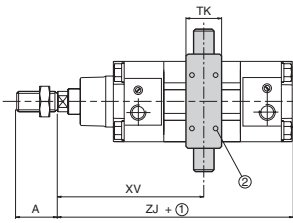
### Montaj pe cadru oscilant MT4

#### Cilindru cu corp profilat PES 453

#### Cilindru cu tiranti PES 450

##### MT4 monobloc

##### MT4 cu 2 flanse



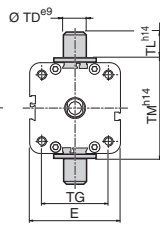
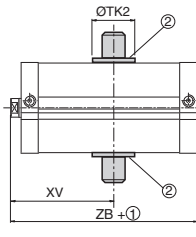
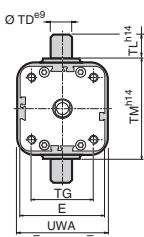
- ① : Cursa
- ② : Blocare mecanica cu stift

tip MT4	Ø mm	cilindru cu corp profilat PES 453								Ø mm	cilindru cu tiranti PES 450							
		fara detectori		cu detectori "T"			cu detectori "COMPACT"				fara detectori		cu detectori "UNI"			cu detectori "COMPACT"		
		XV min.	XV max.	XV min.	XV max.	① min.	XV min.	XV max.	① min.		XV min.	XV max.	XV min.	XV max.	① min.	XV min.	XV max.	① min.
monobloc	32	71,5	74,5 + ①	114	32,5 + ①	82,5	101,5	44,5 + ①	58,5	32	72	74,5 + ①	100	46,5 + ①	53,5	107	39,5 + ①	67,5
	40	80,5	84 + ①	123	42 + ①	82	111,5	53 + ①	60	40	83	82,2 + ①	112	53,2 + ①	58,8	119	46,2 + ①	72,8
	50	87	93 + ①	129	51 + ①	79	120	60 + ①	61	50	89,5	91,3 + ①	119,5	61,3 + ①	58,2	126,5	54,3 + ①	72,2
	63	90,5	105 + ①	132,5	63 + ①	70	119,5	76 + ①	46	63	93,5	102,6 + ①	130,5	65,6 + ①	64,9	136,5	59,6 + ①	76,9
	80	103,5	117 + ①	145,5	75 + ①	71	133,5	87 + ①	47	80	106,5	114,7 + ①	143,5	77,7 + ①	65,8	149,5	71,7 + ①	77,8
cu 2 flanse	100	111	129 + ①	154	86 + ①	68,5	142	96 + ①	44,5	100	114	126,5 + ①	156	84,5 + ①	71,5	161	79,5 + ①	81,5
	32	73	73 + ①	73	73 + ①	74	73	73 + ①	54,5									
	40	82,5	82 + ①	82,5	82,5 + ①	74	82,5	82 + ①	56									
	50	91	89 + ①	91	89,5 + ①	73,5	91	89,5 + ①	57									
	63	95,5	100 + ①	95,5	100 + ①	73	95,5	100 + ①	35									
	80	108,5	112 + ①	108,5	112 + ①	76	108,5	112 + ①	36									
	100	118,5	121 + ①	118,5	121 + ①	82,5	119	121,5 + ①	40,5									

- ① : Cursa

### Cilindri cu corp profilat PEC 449

#### MT4 monobloc



Ø mm	MT4 monobloc					MT4 cu 2 flanse				
	fara detectori		cu detectori "COMPACT"			fara detectori		cu detectori "COMPACT"		
	XV min.	XV max.	XV min.	XV max.	① min.	XV min.	XV max.	XV min.	XV max.	① min.
32	33	25 + ①	47	10,5 + ①	37	34	23,5 + ①	34	23,5 + ①	31
40	34	25 + ①	48	10,5 + ①	38	35,5	23 + ①	35,5	23 + ①	34
50	35	26 + ①	62	-3 + ①	68	38,5	22 + ①	38,5	22 + ①	48
63	37	28 + ①	62	3 + ①	60	42	23 + ①	42	23 + ①	36
80	41,5	32 + ①	66,5	7 + ①	60	46,5	27,5 + ①	46,5	27 + ①	33
100	47	40 + ①	72	15 + ①	57,5	54,5	32,5 + ①	54,5	32,5 + ①	34

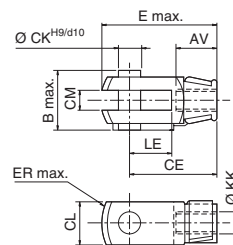
- ① : Cursa
- ② : Blocare mecanica cu stift

Ø mm	A	E	E1	TD	TG	TK	TK1	TK2	TL	TM	UW	UWA	ZB	ZJ
32	22	50	47	12	32,5	18	22	21	12	50	55	64,5	51	120
40	24	57,5	55	16	38	20	28	24	16	63	58	74,5	52	135
50	32	65	65	16	46,5	20	28	28	16	75	68	91	53	143
63	32	79	77	20	56,5	25	35	35	20	90	84	94	57	158
80	40	100	95	20	72	25	35	35	20	110	102	130	64	174
100	40	120	115	25	89	30	40	45	25	132	145	145	77	189

### Cap tija - furca si cap tija cu lagar sferic

Ø mm	AV AX	B	CE	CH	CK	CL	CM	CN	E	EN	ER	LE	LF	KK
32	20	26	40	43	10	20	10 <sup>+0,5 +0,15</sup>	10	56	14	14	20	15	M10 X 1,25
40	22	32	48	50	12	24	12 <sup>+0,5 +0,15</sup>	12	67	16	16	24	17	M12 X 1,25
50	28	41	64	64	16	32	16 <sup>+0,5 +0,15</sup>	16	89	21	21	32	22	M16 X 1,5
63	28	41	64	64	16	32	16 <sup>+0,5 +0,15</sup>	16	89	21	21	32	22	M16 X 1,5
80	33	48	80	77	20	40	20 <sup>+0,5 +0,15</sup>	20	112	25	25	40	26	M20 X 1,5
100	33	48	80	77	20	40	20 <sup>+0,5 +0,15</sup>	20	112	25	25	40	26	M20 X 1,5

#### Cap tija - furca AP2



#### Cap tija cu lagar sferic AP6

