



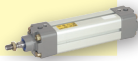
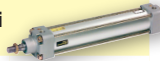
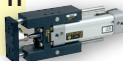

CILINDRI CU CORP PROFILAT SAU CU TIRANTI tip PES

DUBLA ACTIUNE Ø 32 la 100 mm
compatibili cu standardele ISO-AFNOR-DIN
echipati pentru detectori magnetici de pozitie
UNITATE DE GHIDARE "H" cu lagare alunecare

CARACTERISTICI	Fluide	aer sau gaz neutru, filtrat, lubrificat sau nu
	Presiune de lucru	10 bar
	Temperatura ambient	-20°C tola +70°C (alte domenii posibile-la cerere)
	Viteza maxima admisa	2 m/s
	Corp	aliaj aluminiu tratat
	Tija	otel cromat dur
	Etansari piston	PUR (poliuretan)
	Amortizare	pneumatica reglabila
	Standard	ISO 15552 - AFNOR NF ISO 15552 - DIN ISO 15552 (inlocuieste ISO 6431 - AFNOR NFE 49003 VDMA 24562)
Racorduri	G1/8 (Ø 32mm) - G1/4 (Ø40 - 50mm) G3/8 (Ø63 - 80mm) - G1/2 (Ø 100mm)	

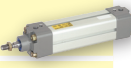
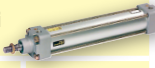
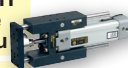
- Corp patrat cu doua tipuri de canale longitudinale ("coada rindunica" si 'T') pentru montarea detectorilor de pozitie
- Corp rotund cu tiranti de stringere a celor doua capace
- Amortizare pneumatica eficienta si precisa
- Cilindru auto-lubrificat cu unitate de ghidare
- Diverse optiuni pentru lucru in medii speciale: dispozitiv blocare tija, medii agresive, temperaturi ridicate...

ALEGEREA PRODUSULUI

Ø mm	cursa mm	corp profilat 		cu tiranti 		Unitate de ghidare "H" cu lagare de alunecare montata pe cilindru 
		referinta	cod	referinta	cod	cod
dubla actiune Ø 32 la 100 mm 						
32	25	PES 32 PA 25 DM	453500030025	PES 32 TA 25 R DM	45000710	-
	50	PES 32 PA 50 DM	453500030050	PES 32 TA 50 R DM	45000711	010762
	80	PES 32 PA 80 DM	453500030080	PES 32 TA 80 R DM	45001095	010844
	100	PES 32 PA 100 DM	453500030100	PES 32 TA 100 R DM	45000712	010763
	125	PES 32 PA 125 DM	453500030125	PES 32 TA 125 R DM	45001113	010845
	160	PES 32 PA 160 DM	453500030160	PES 32 TA 160 R DM	45000713	010764
	200	PES 32 PA 200 DM	453500030200	PES 32 TA 200 R DM	45000714	010765
	250	PES 32 PA 250 DM	453500030250	PES 32 TA 250 R DM	45000715	010766
40	25	PES 40 PA 25 DM	453500040025	PES 40 TA 25 R DM	45000716	-
	50	PES 40 PA 50 DM	453500040050	PES 40 TA 50 R DM	45000717	010770
	80	PES 40 PA 80 DM	453500040080	PES 40 TA 80 R DM	45001096	010846
	100	PES 40 PA 100 DM	453500040100	PES 40 TA 100 R DM	45000718	010771
	125	PES 40 PA 125 DM	453500040125	PES 40 TA 125 R DM	45001114	010847
	160	PES 40 PA 160 DM	453500040160	PES 40 TA 160 R DM	45000719	010772
	200	PES 40 PA 200 DM	453500040200	PES 40 TA 200 R DM	45000720	010773
	250	PES 40 PA 250 DM	453500040250	PES 40 TA 250 R DM	45000721	010774
	320	PES 40 PA 320 DM	453500040320	PES 40 TA 320 R DM	45000722	010775
	400	PES 40 PA 400 DM	453500040400	PES 40 TA 400 R DM	45000723	010776
50	25	PES 50 PA 25 DM	453500050025	PES 50 TA 25 R DM	45000724	-
	50	PES 50 PA 50 DM	453500050050	PES 50 TA 50 R DM	45000725	010778
	80	PES 50 PA 80 DM	453500050080	PES 50 TA 80 R DM	45001097	010848
	100	PES 50 PA 100 DM	453500050100	PES 50 TA 100 R DM	45000726	010779
	125	PES 50 PA 125 DM	453500050125	PES 50 TA 125 R DM	45001115	010849
	160	PES 50 PA 160 DM	453500050160	PES 50 TA 160 R DM	45000727	010780
	200	PES 50 PA 200 DM	453500050200	PES 50 TA 200 R DM	45000728	010781
	250	PES 50 PA 250 DM	453500050250	PES 50 TA 250 R DM	45000729	010782
	320	PES 50 PA 320 DM	453500050320	PES 50 TA 320 R DM	45000730	010783
	400	PES 50 PA 400 DM	453500050400	PES 50 TA 400 R DM	45000731	010784
	500	PES 50 PA 500 DM	453500050500	PES 50 TA 500 R DM	45000732	010785
630	PES 50 PA 630 DM	453500050630	PES 50 TA 630 R DM	45000733	-	

CILINDRI CU CORP PROFILAT SI CU TIRANTI - tip PES

ALEGEREA PRODUSULUI

Ø mm	cursa mm	corp profilat 		cu tiranti 		unitate de ghidare "H" cu lagare de alunecare montata pe cilindru 		
		referinta	cod	referinta	cod		cod	
63	25	PES 63 PA	25 DM	453500060025	PES 63 TA	25 R DM	45000734	-
	50	PES 63 PA	50 DM	453500060050	PES 63 TA	50 R DM	45000735	010786
	80	PES 63 PA	80 DM	453500060080	PES 63 TA	80 R DM	45001098	010850
	100	PES 63 PA	100 DM	453500060100	PES 63 TA	100 R DM	45000736	010787
	125	PES 63 PA	125 DM	453500060125	PES 63 TA	125 R DM	45001116	010851
	160	PES 63 PA	160 DM	453500060160	PES 63 TA	160 R DM	45000737	010788
	200	PES 63 PA	200 DM	453500060200	PES 63 TA	200 R DM	45000738	010789
	250	PES 63 PA	250 DM	453500060250	PES 63 TA	250 R DM	45000739	010790
	320	PES 63 PA	320 DM	453500060320	PES 63 TA	320 R DM	45000740	010791
	400	PES 63 PA	400 DM	453500060400	PES 63 TA	400 R DM	45000741	010792
	500	PES 63 PA	500 DM	453500060500	PES 63 TA	500 R DM	45000742	010793
	630	PES 63 PA	630 DM	453500060630	PES 63 TA	630 R DM	45000743	-
80	25	PES 80 PA	25 DM	453500080025	PES 80 TA	25 R DM	45000744	-
	50	PES 80 PA	50 DM	453500080050	PES 80 TA	50 R DM	45000745	010794
	80	PES 80 PA	80 DM	453500080080	PES 80 TA	80 R DM	45001099	010852
	100	PES 80 PA	100 DM	453500080100	PES 80 TA	100 R DM	45000746	010795
	125	PES 80 PA	125 DM	453500080125	PES 80 TA	125 R DM	45001117	010853
	160	PES 80 PA	160 DM	453500080160	PES 80 TA	160 R DM	45000747	010796
	200	PES 80 PA	200 DM	453500080200	PES 80 TA	200 R DM	45000748	010797
	250	PES 80 PA	250 DM	453500080250	PES 80 TA	250 R DM	45000749	010798
	320	PES 80 PA	320 DM	453500080320	PES 80 TA	320 R DM	45000750	010799
	400	PES 80 PA	400 DM	453500080400	PES 80 TA	400 R DM	45000751	010800
	500	PES 80 PA	500 DM	453500080500	PES 80 TA	500 R DM	45000752	010801
	630	PES 80 PA	630 DM	453500080630	PES 80 TA	630 R DM	45000753	-
100	50	PES 100 PA	50 DM	453500010050	PES 100 TA	50 R DM	45001192	010802
	80	PES 100 PA	80 DM	453500010080	PES 100 TA	80 R DM	45001193	010854
	100	PES 100 PA	100 DM	453500010100	PES 100 TA	100 R DM	45001194	010803
	125	PES 100 PA	125 DM	453500010125	PES 100 TA	125 R DM	45001195	010855
	160	PES 100 PA	160 DM	453500010160	PES 100 TA	160 R DM	45001196	010804
	200	PES 100 PA	200 DM	453500010200	PES 100 TA	200 R DM	45001197	010805
	250	PES 100 PA	250 DM	453500010250	PES 100 TA	250 R DM	45001198	010806
	320	PES 100 PA	320 DM	453500010320	PES 100 TA	320 R DM	45001199	010807
	400	PES 100 PA	400 DM	453500010400	PES 100 TA	400 R DM	45001200	010808
	500	PES 100 PA	500 DM	453500010500	PES 100 TA	500 R DM	45001201	010809
	630	PES 100 PA	630 DM	453500010630	PES 100 TA	630 R DM	45001202	-

OPTIUNI SI ACCESORII

Accesorii montaj
(vezi pag. 41)



Detectors magnetici
si piese de montaj
(vezi pag. 50)



Droșele
(vezi pag. 108)



Alte diametre ci curse
la cerere

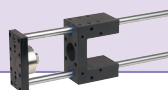
Varianta cu tija
bilaterala



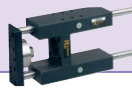
Versiuni pentru temperaturi
mari, mediu agresiv...



Unitate de ghidare "U"



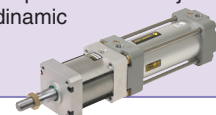
Unitate de ghidare "H" cu
lagare cu bile



Dispozitiv blocare tija
static



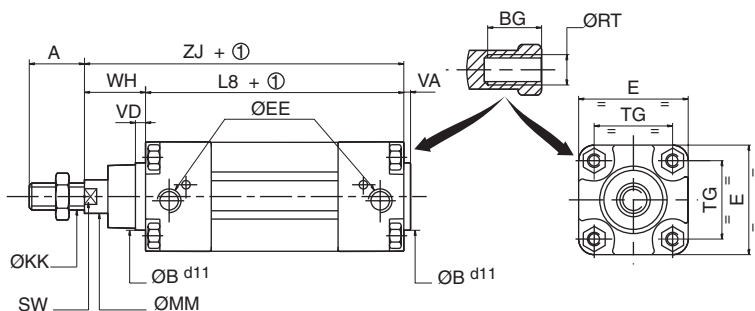
Dispozitiv blocare tija
dinamic



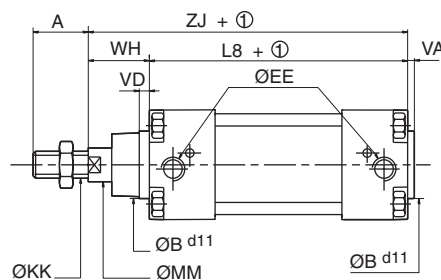
CILINDRI CU CORP PROFILAT SI CU TIRANTI - tip PES

DIMENSIUNI

Cilindri cu corp profilat PES 453



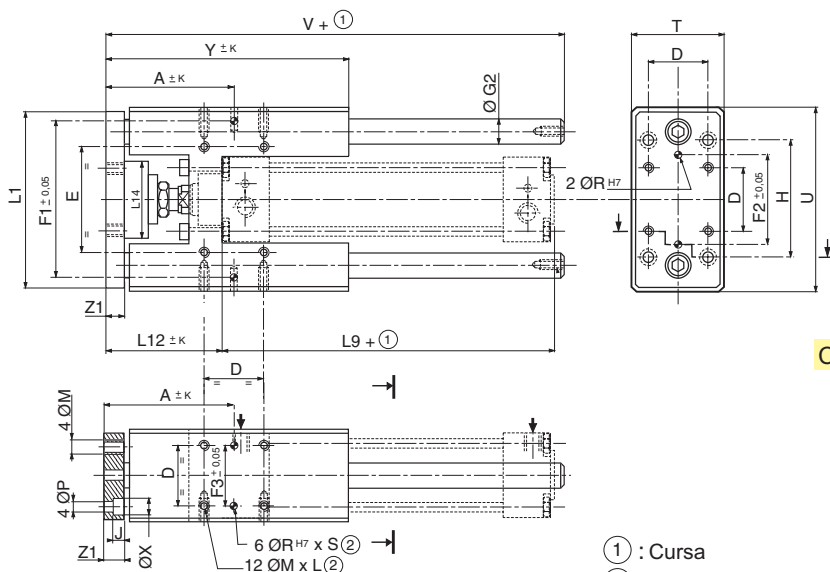
Cilindri cu tiranti PES 450



① Stroke

Ø mm	A	B	BG	E	EE	KK	L8	MM	RT	SW	TG	VA	VD	WH	ZJ
32	22	30	16	50	G1/8	M10 x 1,25	94	12	M6	10	32,5 ^{+0,5}	4	4	26	120
40	24	35	16	57,5	G1/4	M12 x 1,25	105	16	M6	13	38 ^{+0,5}	4	4	30	135
50	32	40	16	65	G1/4	M16 x 1,5	106	20	M8	17	46,5 ^{+0,6}	4	4	37	143
63	32	45	16	79	G3/8	M16 x 1,5	121	20	M8	17	56,5 ^{+0,7}	4	4	37	158
80	40	45	17	100	G3/8	M20 x 1,5	128	25	M10	22	72 ^{+0,7}	4	4	46	174
100	40	55	17	120	G1/2	M20 x 1,5	138	25	M10	22	89 ^{+0,7}	4	4	51	189

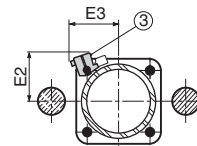
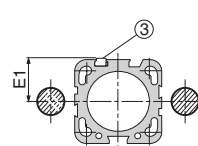
Unitate de ghidare "H" cu lagare



Ø (mm)	E1	E2	E3
32	27	32	29
40	31	34	32
50	36	42	40
63	41	47	45
80	52	51	52
100	62	60	61

Cilindri cu corp profilat

Cilindri cu tiranti



① : Cursa

② : Adincime

③ : La cilindri cu cursa scurta, cu tub profilat sau cu tiranti, detectorii standard pentru capetele de cursa, se vor monta pe doua fete opuse ale cilindrului

Ø mm	A	D	E	F1	F2	F3	G2	H	J	K	L	L1	L9	L12	M	P	R	S	T	U	V	X	Y	Z1
32	78,5	32,5	61	81	50	32,5	12	78	6,5	2,5	12	90	98	71,5	M6	6,6	6	10	50	97	182	11	147,5	12
40	85	38	69	99	54	38	16	84	6,5	3	12	110	109	77	M6	6,6	6	10	58	115	192	11	158	12
50	97	46,5	85	119	72	46,5	20	100	9	4	16	130	110	92,5	M8	9	6	10	70	137	237	15	172	15
63	106	56,5	100	132	82	56,5	20	105	9	4	16	145	125	93	M8	9	6	10	85	152	237	15	204	15
80	130	72	130	166	106	72	25	130	11	5	20	180	132	115	M10	11	6	10	105	188	280	18	243	20
100	140,5	89	150	190	131	89	25	150	11	5	20	200	142	120,5	M10	11	6	10	130	214	280	18	248,5	20