



# CILINDRI ROTUNZI tip ISOCLAIR


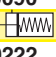
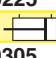
SIMPLA SAU DUBLA ACTIUNE Ø 16 la 25 mm  
DUBLA ACTIUNE Ø 32 la 63 mm  
compatibili cu ISO-CETOP-AFNOR  
echipati pentru detectori magnetici de pozitie

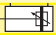
## CARACTERISTICI

Fluide	aer, gaz neutru, filtrat, lubrificat sau nu
Presiune de lucru	max. 10 bar
Temperatura	-10°C to +70°C
Corp	inox (Ø 16 to 25 mm) - aliaj aluminiu (Ø 32 to 63 mm)
Tija	inox (Ø 16 la 25 mm) - oțel cromat (Ø 32 la 63 mm)
Etansare piston	PUR (poliuretana)
Amortizare	pneumatica reglabila (Ø 25 la 63 mm)
Standarde	Ø 16 la Ø 25 mm: ISO 6432 - 8140 - 8139 - AFNOR NF E 49-030 CETOP RP 52 P - RP 102 P - RP 103 P Ø 32 la Ø 63 mm: ISO 6431 - 8140 - 8139 CETOP RP 43 P - RP 102 P - RP 103 P
Racorduri	M5 (Ø 16 mm) - G1/8 (Ø 20 la 32 mm) G1/4 (Ø 40 la -50 mm) - G3/8 (Ø 63 mm)

- Accesorii de montaj integrate, terminatie filetata spre tija, flansa cu ochi tip MP4, pentru montaj oscilant, la celalalt capat**
- Terminatiile filetate ale corpului, la ambele capete, asigura un montaj compact**

## ALEGEREA PRODUSULUI

	Ø mm	cursa mm	referinta	cod	
fara echipare pentru detectori magnetici	<b>simplic actiune - tija retrasa in repaos</b> 				
	16	50	C16 AS 50-SER	<b>43500086</b>	
	20	25	C20 AS 25-SER	<b>43500087</b>	
		50	C20 AS 50-SER	<b>43500088</b>	
	25	25	C25 AS 25-SER	<b>43500089</b>	
		50	C25 AS 50-SER	<b>43500090</b>	
	echipat pentru detectori magnetici	<b>simplic actiune - tija iesita in repaos</b> 			
		20	25	C20 AS 25-SES	<b>43500222</b>
			50	C20 AS 50-SES	<b>43500223</b>
		25	25	C25 AS 25-SES	<b>43500224</b>
50			C25 AS 50-SES	<b>43500225</b>	
<b>dubla actiune</b> 					
16		25	C16 AS 25-DM	<b>43500305</b>	
		50	C16 AS 50-DM	<b>43500306</b>	
		80	C16 AS 80-DM	<b>43500307</b>	
		100	C16 AS 100-DM	<b>43500308</b>	
20	25	C20 AS 25-DM	<b>43500309</b>		
	50	C20 AS 50-DM	<b>43500310</b>		
	80	C20 AS 80-DM	<b>43500311</b>		
	100	C20 AS 100-DM	<b>43500312</b>		
25	25	C25 AS 25-DM	<b>43500313</b>		
	50	C25 AS 50-DM	<b>43500314</b>		
	80	C25 AS 80-DM	<b>43500315</b>		
	100	C25 AS 100-DM	<b>43500316</b>		
	160	C25 AS 160-DM	<b>43500317</b>		

	Ø mm	cursa mm	referinta	cod
echipat pentru detectori magnetici	<b>dubla actiune - amortizare pneumatica reglabila</b> 			
	25	25	C25 A 25-DM	<b>43500432</b>
		50	C25 A 50-DM	<b>43500433</b>
		80	C25 A 80-DM	<b>43500434</b>
	32	50	CIS32 A 50-DM	<b>43800141</b>
		100	CIS32 A 100-DM	<b>43800142</b>
	40	160	CIS32 A 160-DM	<b>43800143</b>
		50	CIS40 A 50-DM	<b>43800146</b>
	50	100	CIS40 A 100-DM	<b>43800147</b>
		160	CIS40 A 160-DM	<b>43800148</b>
	63	50	CIS50 A 50-DM	<b>43800153</b>
		100	CIS50 A 100-DM	<b>43800154</b>
		160	CIS50 A 160-DM	<b>43800155</b>
		50	CIS63 A 50-DM	<b>43800160</b>
	100	CIS63 A 100-DM	<b>43800161</b>	
	160	CIS63 A 160-DM	<b>43800162</b>	

## OPTIUNI SI ACCESORII

Accesorii de montaj  
(vezi pag. 46)



Detectori de pozitie cu  
piese de montaj  
(vezi pag. 50)



Versiune tija bilaterala

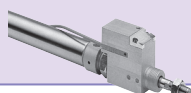


Alte diametre si curse  
la cerere

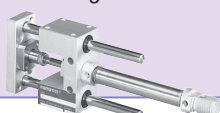
Versiune abti-coroziiva  
corp inox  
(tip CIX)



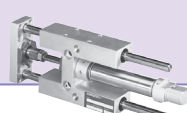
Dispozitiv blocare tija



Unitate ghidare "U"



Unitate ghidare "H"



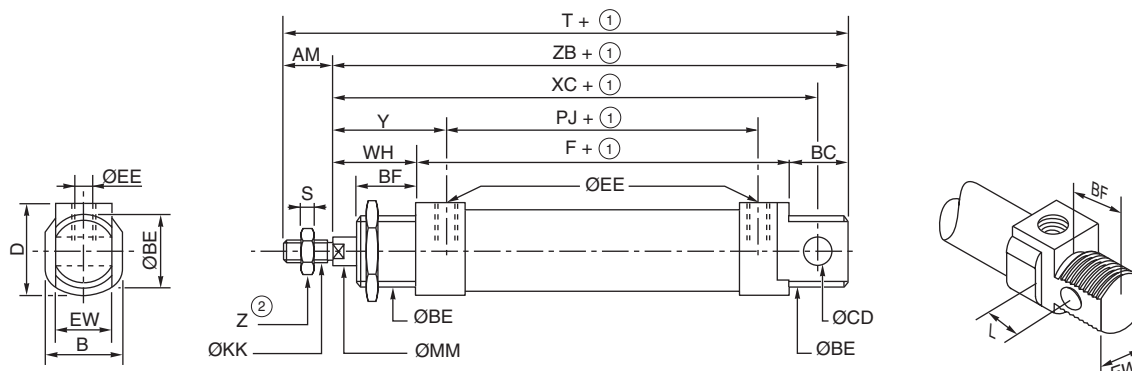
Tija hexagonala  
anti-rotatie



# CILINDRI ROTUNZI - tip ISOCLAIR

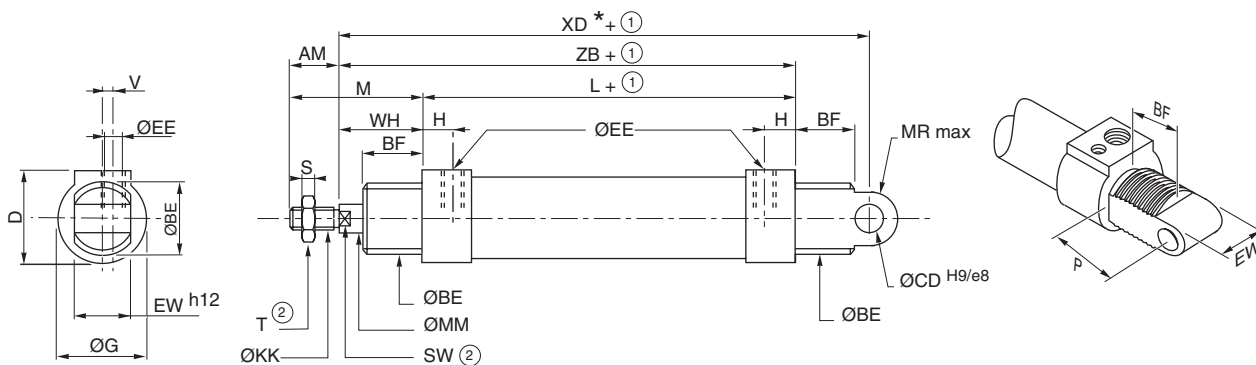
## DIMENSIUNI

### Cilindri Ø 16 la 25 mm (livrati cu piulita de fixare)



Ø mm	AM	B	BC	BE	BF	CD	D	EE	EW	F	KK	L	MM	PJ	S	T	WH	XC	Y	Z	ZB
16	16	20	14	M16x1,5	14	6 H11	21	M5	12 d11	55,7	M 6 x 1	9	6	41,5	3	107,3	22	81,5	29	10	91,5
20	20	29	17,5	M22x1,5	17,5	8 H11	29	G 1/8	16 d11	64,2	M 8 x 1,25	12	10	47,3	4	125,3	24	95	32,5	13	103,5
25	22	29	17,5	M22x1,5	17,5	8 H11	30	G 1/8	16 d11	69,5	M10 x 1,25	12	10	52,5	5	136,8	28	104	36,5	17	115

### Cilindri Ø 32 la 63 mm (livrati fara piulita de fixare)



Ø mm	AM	BE	BF	CD	D	EE	EW	G	H	KK	L	M	MM	MR	P	S	SW	T	V	WH	XD	ZB
32	22	M 30 x 1,5	16	10	39	G 1/8	26	38	13,5	M10 x 1,25	92	49	12	11	24	5	10	16	3,5	27	143	119
40	24	M 36 x 1,5	19	12	46	G 1/4	28	45	16,5	M12 x 1,25	107	53	18	13	24	6	13	18	4,7	29	160	136
50	32	M 45 x 1,5	③	12	60	G 1/4	32	60	14	M16 x 1,50	110	67	18	13	25,5	8	16	24	5,2	35	170	145
63	32	M 45 x 1,5	23	16	75	G 3/8	40	75,5	17	M16 x 1,50	125	67	22	17	31	8	16	24	5,5	35	191	160

① Cursa

② Intre suprafetele plane

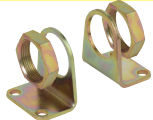
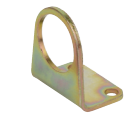
③ 26,5mm pe capatul frontal, 18,5mm pe capatul din spate

(\*) + 25mm la cilindri cu simpla actiune, cursa 50mm

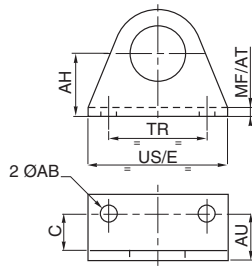
# CILINDRI ROTUNZI - tip ISOCLAIR

## ACCESORII DE MONTAJ

### Talpa inalta MS3 (per bucata) MS1 (set 2 bucati)



Ø mm		cod
16	43900183	(MS3)
20	43900184	(MS3)
25	43900184	(MS3)
32	43900199	(MS1)
40	43900200	(MS1)
50	43900201	(MS1)
63	43900202	(MS1)

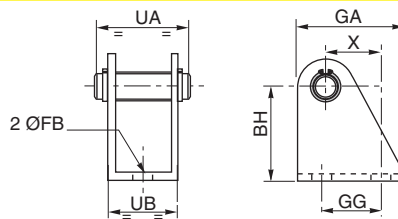


Ø mm	AB	AH	AU	C	MF AT	TR	US E
16	5,5	20	14	10	4	32	42
20	6,6	25	17	12	5	40	54
25	6,6	25	17	12	5	40	54
32	7	32	25	22	3	32	45
40	9	36	27	24	3	36	52
50	9	45	30	26	4	45	75
63	9	50	30	26	4	50	75

### Suport spate cu ax

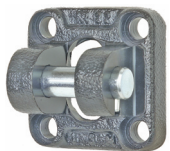


Ø mm		
16	43900181	
20	43900182	
25	43900182	

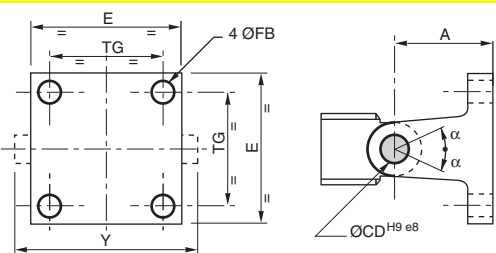


Ø mm	BH	FB	GA	GG	UA	UB	X
16	27	5,5	25	16	25	18	13,5
20	30	6,6	32	20	32	24	16
25	30	6,6	32	20	32	24	16

### Suport oscilant MP 2 + (MP4)\*



Ø mm		
32	43400543	
40	43400544	
50	43400545	
63	43400546	



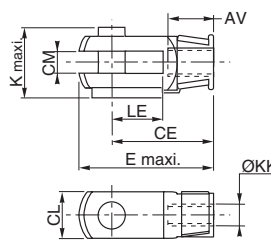
Ø mm	A	CD	E	FB	TG	Y	α
32	20	10	45	7	33	54	76°
40	23	12	52	7	40	62	81°
50	25	12	65	9	49	70	58°
63	30	16	75	9	59	80	76°

\* MP4 integrat in constructia capacului din spate al cilindrului

### Cap tija tip furca (ISO 8140 - RP 102P) AP2



Ø mm		
16	43900159	
20	43900161	
25	43400016	
32	43400016	
40	43400017	
50	43400018	
63	43400018	

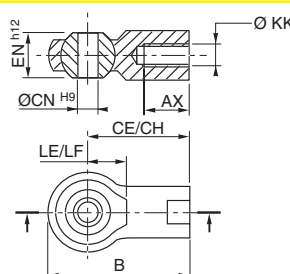


Ø mm	AV	CE	CM	E	K	KK	LE CL
16	12	24	6	33,5	16,5	M6	12
20	16	32	8	45	22	M8	16
25	20	40	10	56	26	M10	20
32	20	40	10	56	26	M10	20
40	22	48	12	67	32	M12	24
50	28	64	16	89	41	M16	32
63	28	64	16	89	41	M16	32

### Cap tija cu lagar sferic (ISO 8139 - RP 103P) AP6



Ø mm		
16	43900186	
20	43900187	
25	43400001	
32	43400001	
40	43400002	
50	43400003	
63	43400003	

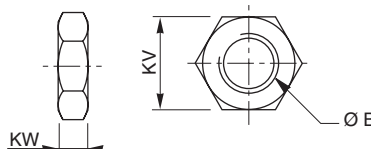


Ø mm	AX	B	CE CH	CN	EN	KK	LE LF
16	12	40	30	6	9	M6	11
20	16	48	36	8	12	M8	13
25	20	57	43	10	14	M10	15
32	20	57	43	10	14	M10	15
40	22	66	50	12	16	M12	17
50	28	85	64	16	21	M16	22
63	28	85	64	16	21	M16	22

### MR3 piulita fixare frontala



Ø mm		
16	43900150	
20	43900151	
25	43900151	
32	43900203	
40	43900204	
50	43900205	
63	43900205	



Ø mm	B	KV	KW
16	M 16 x 1,5	19	4
20	M 22 x 1,5	27	5
25	M 22 x 1,5	27	5
32	M 30 x 1,5	35	10
40	M 36 x 1,5	42	10
50	M 45 x 1,5	60	12
63	M 45 x 1,5	60	12